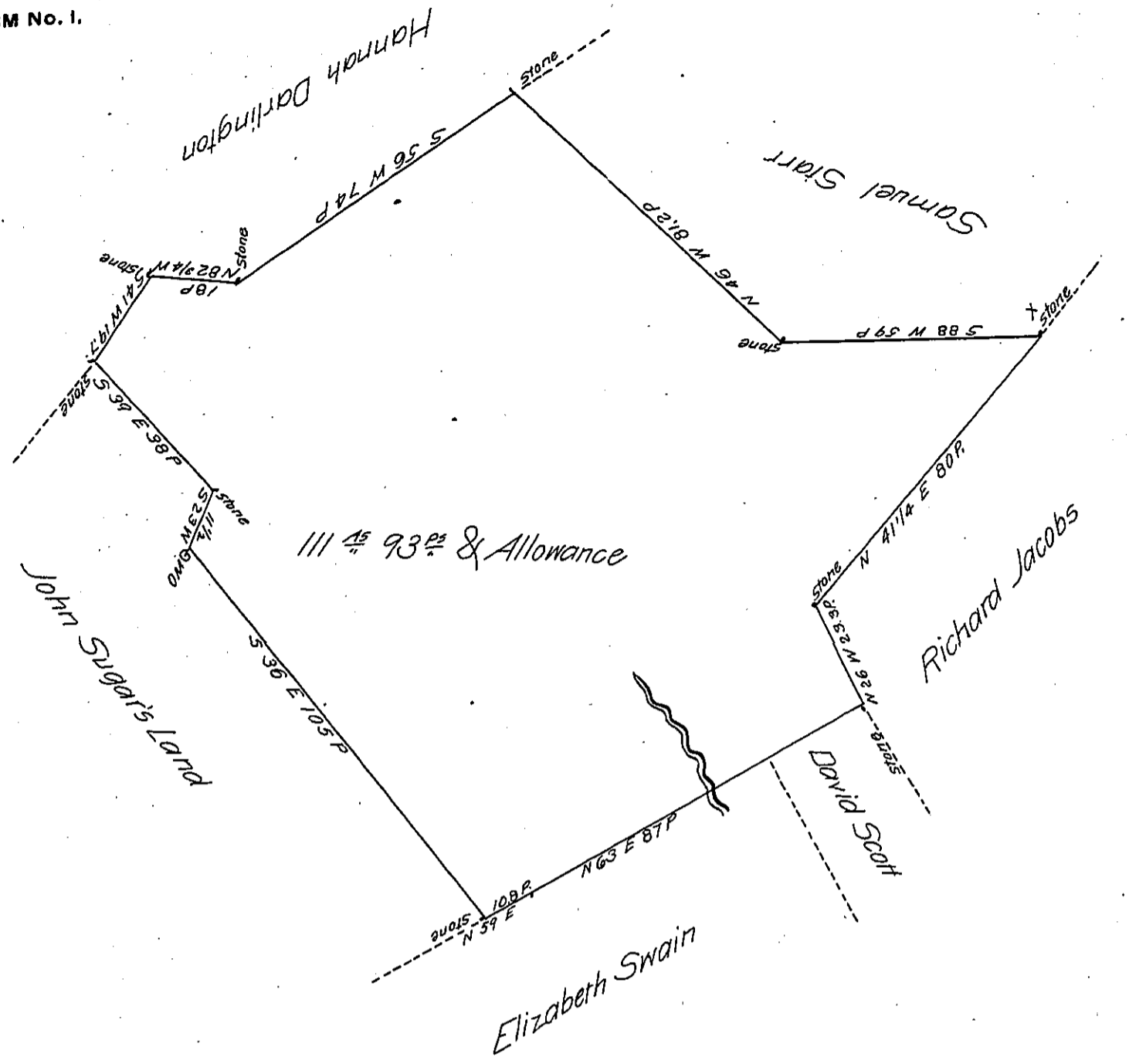


FORM No. 1.



The above Draught represents a Tract of Land Situate in East Bradford Township Chester County containing 111 Acres 93 perches & Allowance of six percent &c Surveyed May 9th 1822 to Dennis M^eSwine on his warrant dated 11th day of March 1734.

To Samuel Cochran Esq^e }
 Surveyor General

Pr. Arthur Andrew D.S.

IN TESTIMONY that the above is a copy of the original remaining on file in the Department of Internal Affairs of Pennsylvania, made conformably to an Act of Assembly approved the 16th day of February, 1833, I have hereunto set my Hand and caused the Seal of said Department to be affixed at Harrisburg, this twentysixth day of January 1906

Arthur Andrew
 Secretary of Internal Affairs.